



Alfa

LifeScapes

Its where you are destined to be...

Let your mind take over and you will realize there is much more than what your eyes can see

About *Alfa* LifeScapes

LifeScapes is where life and space come together making it a LifeScape, where you let your mind take over and realize there is more to it than what your eyes can see.

The two eleven storey towers of LifeScapes are for those to whom style and taste means LifeStyle.

LifeScapes is a reflection of who you are, no compromise, only happiness!

The true meaning of our dreams put into LifeScapes.





CLUB HOUSE

AMENITY SPACE

A

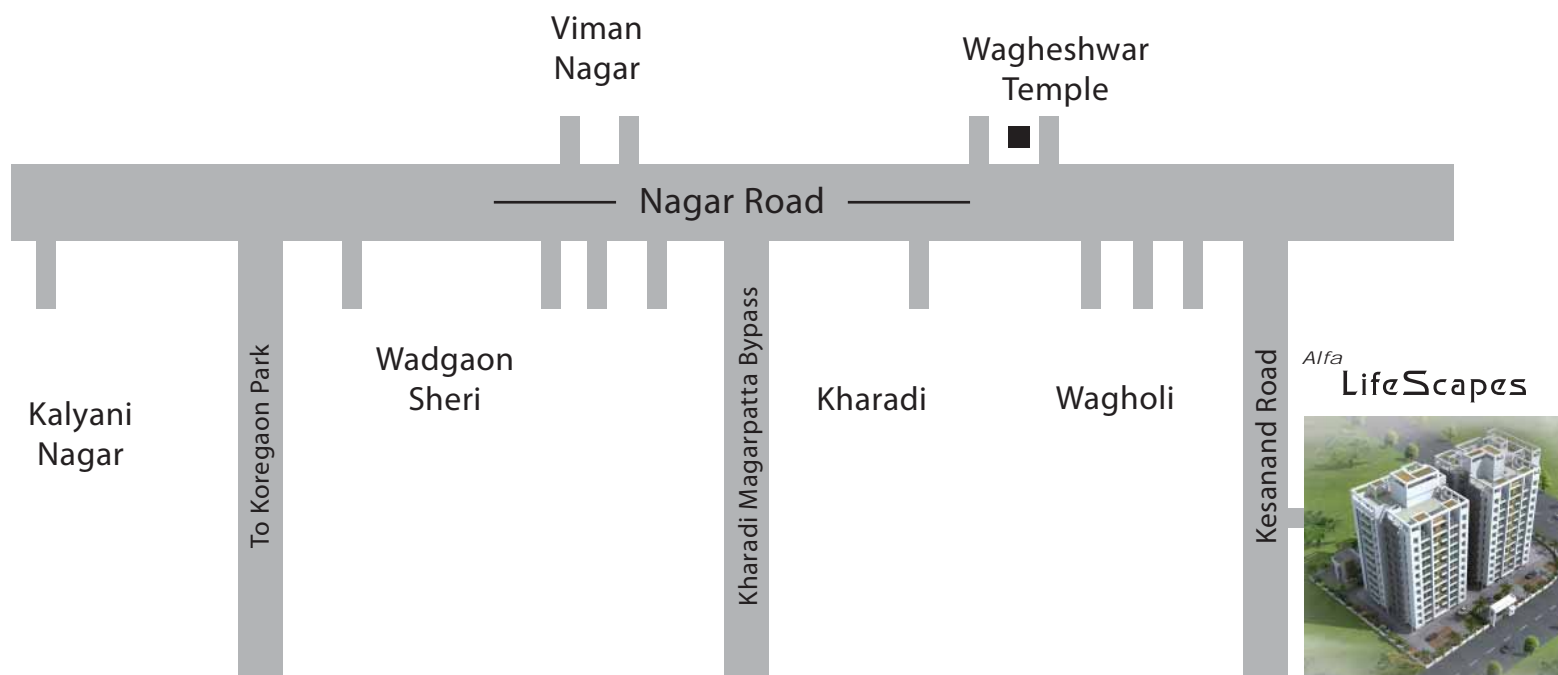
B

ENTRANCE

Whichever way you look at it, this is the future... this might just belong to you

Location *Alfa* LifeScapes

Right in the very upcoming and neatly laid out suburb of pune, Wagholi boasts of Schools and Colleges of International Standards. Wagholi is a suburb which is the Epitome of Modern requirements, IT Parks, Schools, Hospitals, Shopping Malls, Multiplexes, Hotels and Much more...



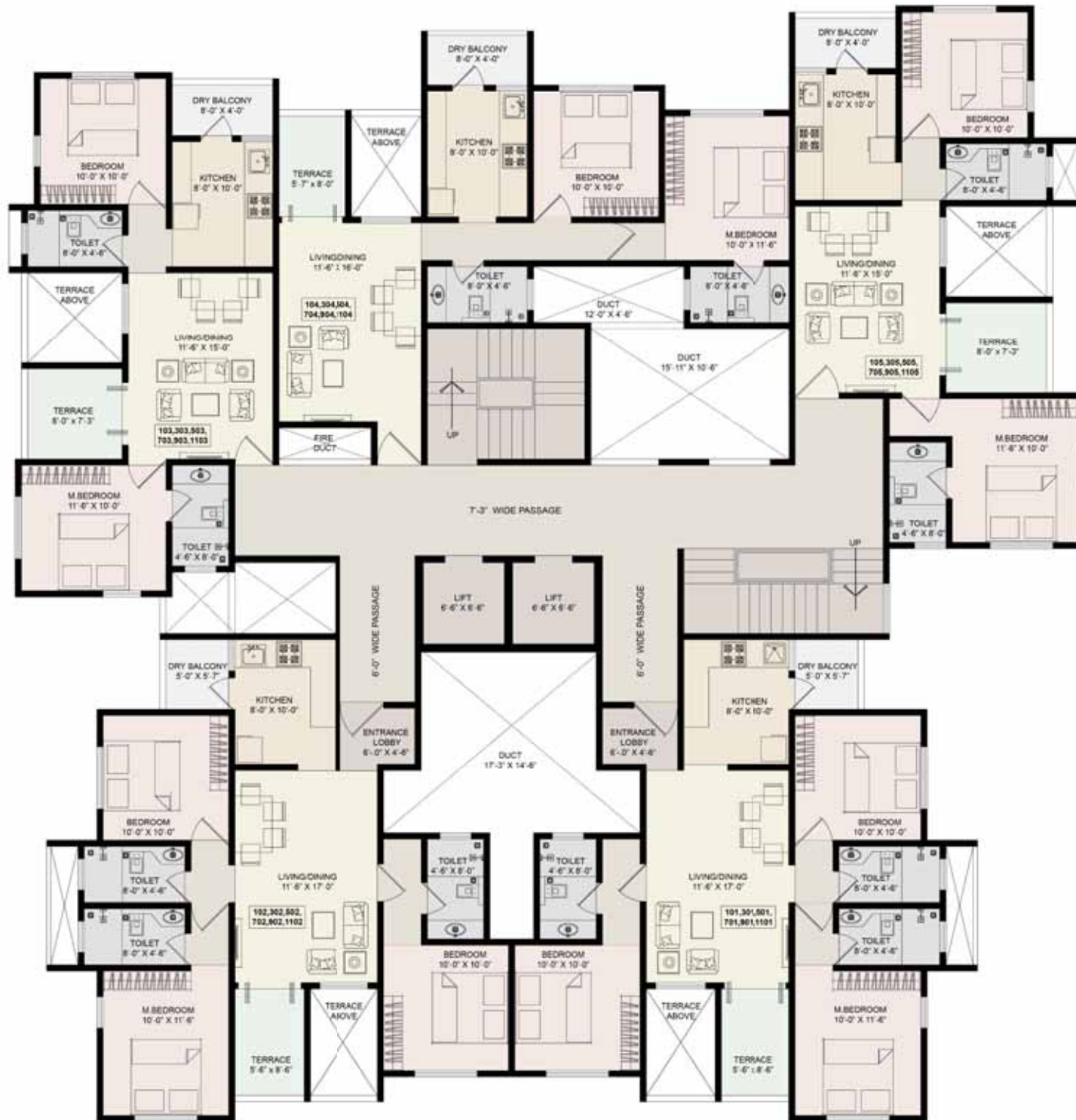
- 12km from pune international airport
- 15 km pune railway station
- Close Proximity to Ranjangaon MIDC

Project Layout *Alfa* LifeScapes

A tribute to those who look for perfection in class and life.

LifeScapes opens doors to your dream home set in the midst of greenery and clean air. Houses created for comfort and traunquil feelings almost meditating with nature.

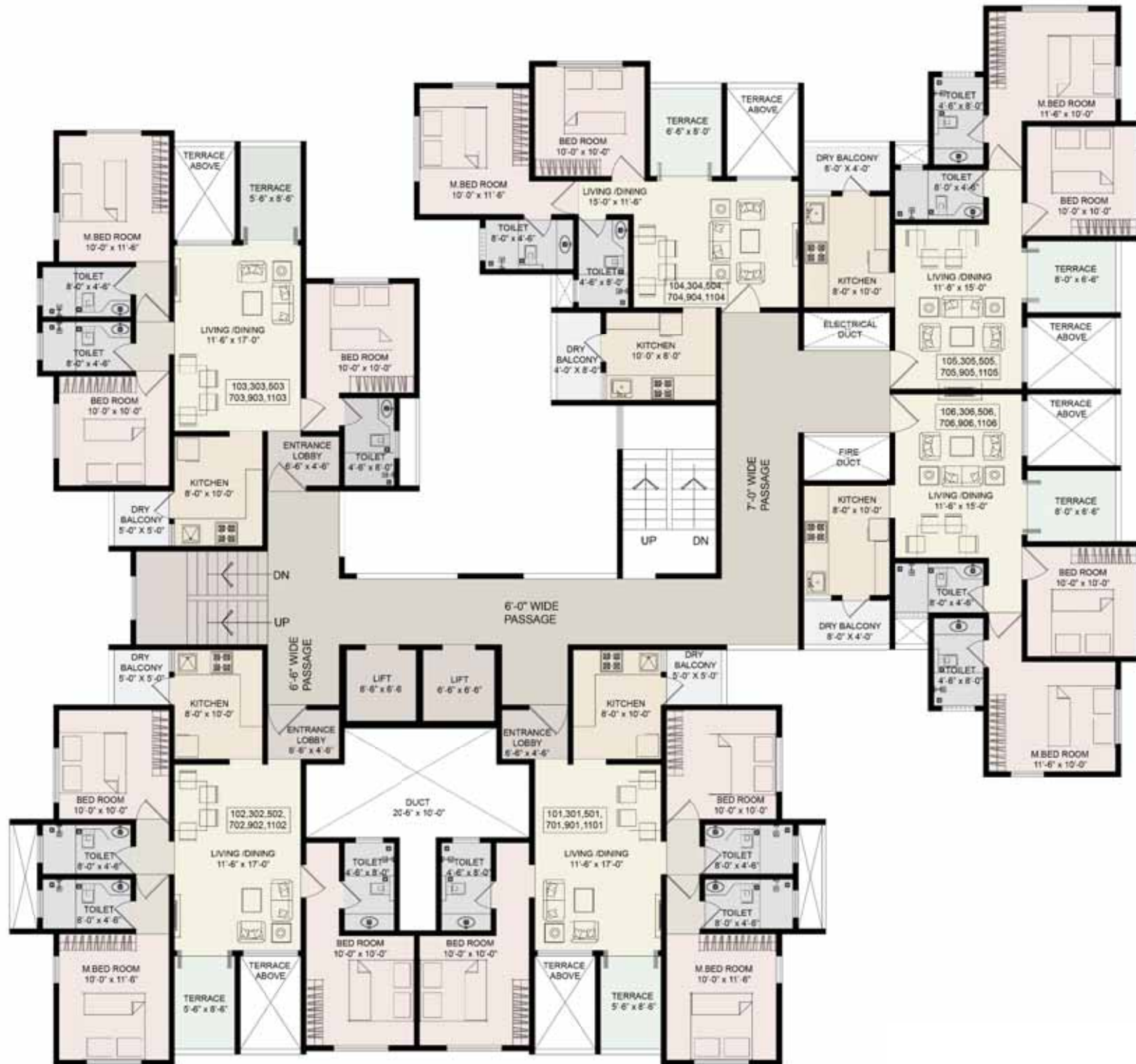
For some this is a destination for others it might just be destiny...



WING A

Typical Floor Plan: 1st,3rd,5th,7th,9th,11th Floor

When you open the doors to your very own dream home



WING B

Typical Floor Plan: 1st,3rd,5th,7th,9th,11th Floor

Club House *Alfa* LifeScapes



Where creativity flows through the centre of concrete

Club House *Alfa* LifeScapes

LifeScapes Club House boasts about its social networking for members as there is not only a Fully Equipped Gymnasium but also an array of other amenities for all ages.



Party Lawn



Fully Equipped Gymnasium



Childrens Play Area

A tribute to those who look for perfection and class

Amenities & Specifications at *Alfa* LifeScapes

Common Amenities:

Anti Termite Treatment in Parking
Fire Fighting System
Power Back up for Lifts and Common Services
Decorative Entrance Lobby, Name Board and Letter Boxes
Internal Concrete Roads of Tremix with combination of Paving Blocks
Rain Water Harvesting System
Sewage Treatment Plant
Reverse Osmosis (R.O) Plant

Layout Amenities:

Club House with Fully Equipped Gymnasium
Indoor Games Room
Party Lawn
Children's Play Area

SPECIFICATIONS

RCC and Brickwork & Plaster:

Earthquake Resistant R.C.C Frame Structure
6 " Internal and External Brickwork
Sand finished External Plaster
Neru finish Internal Plaster

Flooring:

2' X 2' Vitrified Flooring in full flat
Antiskid Tiles in Bathrooms and Terraces
Kitchen:
Granite Kitchen Platform with stainless steel sink
Glazed Dado Tiles upto Lintel Level above Kitchen Platform
Separate Taps for drinking and domestic water

Doors:

Decorative Main Entrance door with safety lock and name plate
Internal Flush Doors with brass / c.p fittings
Internal Wooden Door Frames

Windows:

2 Track Powder Coated Aluminium Sliding Windows with Mosquito net and security Grills
Sill for Windows
SS Railings with Glass for Terraces

Toilets:

Designer Glazed Dado Tiles upto Lintel Level
Wall Hung Commode with Flush Tank
Good Quality Sanitary Ware
Good quality CP Fittings of Jaguar/equivalent make
Concealed Plumbing
Hot & Cold Mixer for shower

Electrification:

Concealed Copper wiring with MCB
Provision for Phone and TV Points in Living and Master Bed Room
Provision for AC in Master Bed Room

Painting:

Semi Acrylic Paint for external walls
Acrylic Emulsion Paint for internal Walls

Lift:

Automatic Lift of Kone / equivalent make.

Alfa LifeScapes

Its where you are destined to be...

Credits

RCC Design
G.A Bhilare Consultants Pvt Ltd

Architects
VISTAAS ARCHITECTURAL CONSULTANTS
Mumbai - Hyderabad - Pune - Vizag

Legal Advisors
Parwani Advocates

A Project By

 KOTHARI REALTY™



 **ARK PREM CONSTRUCTIONS**

ISO 9001 : 2000



Site Address:

Gat no. 868, Wagholi Kesanand Road,
Wagholi, Pune - 412 207.
Tel.: +91 20 3240 2110 / +91 90118 40004
website : www.alfalifescapes.com
e-mail : sales@alfalifescapes.com

All information contained in this brochure provides an overview of the project. It does not constitute part of an offer or contract.
Designs and specifications are subject to change without prior notice. Perspectives shown are an artists impression.